

EW-7975

Electric Cables (Internal Specifications)

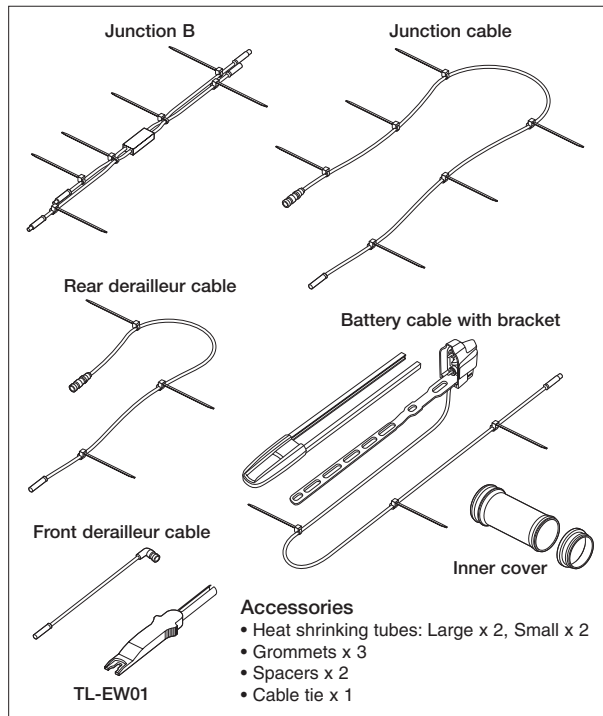
CAUTION

- If using an industrial-use dryer, make sure that no burning from the hot air occurs.

Note

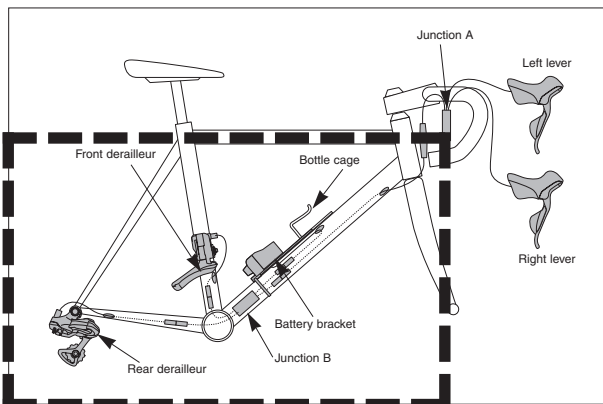
- Do not remove the cable ties which are secured to the cables. They are used to stop the cables from moving inside the frame.
- Always be sure to use the TL-EW01 special tool to remove the cable.
- Be careful not to let water get into the terminal.
- Be sure to read these service instructions in conjunction with the service instructions for the SM-EW79A before use.

Components



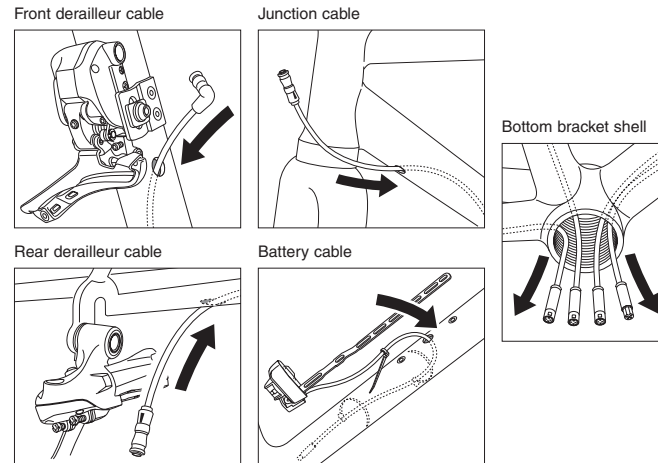
Routing Map

Names and locations of each part



Routing of the electric cables

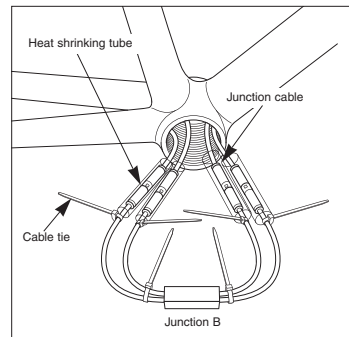
First, pass the cables for the junction, battery, front derailleur and rear derailleur through the hole in the frame to the bottom bracket shell.



Connection of cables to junction B

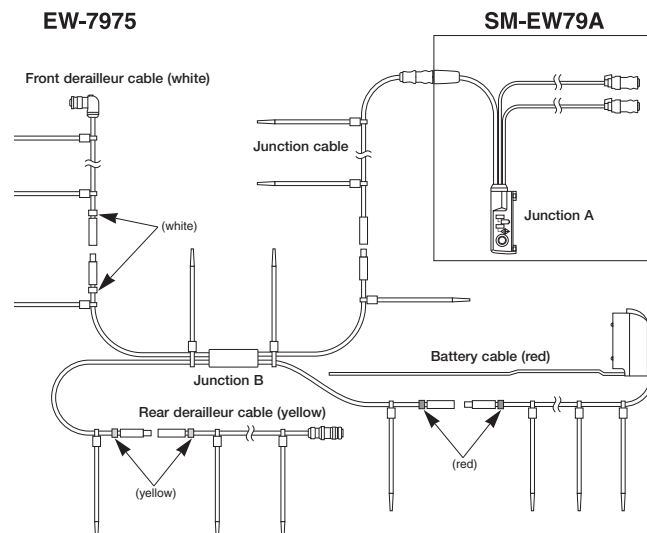
Place heat shrinking tubes over the connectors of each cable when connecting them. Use the larger-diameter ones for the junction cables. Place the tubes against the cable ties on the junction side so that the connectors are in the middles of the tubes.

* At this stage, provisionally connect the front derailleur, rear derailleur, junction and battery cables and check the various operations. Once the heat shrinking tubes have been fully attached, they cannot be removed.



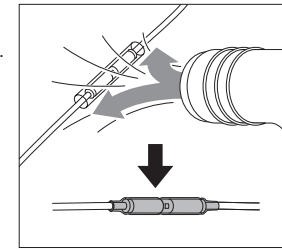
The cables have color tubes attached to them for identification. Refer to the cable connection diagram.

Cable connection diagram



Attaching the heat shrinking tubes

Use an industrial-use dryer to shrink the tubes from the middles toward the ends, while trying to expel as much air as possible. Check that melted adhesive is protruding from both ends of the heat shrinking tubes.



CAUTION

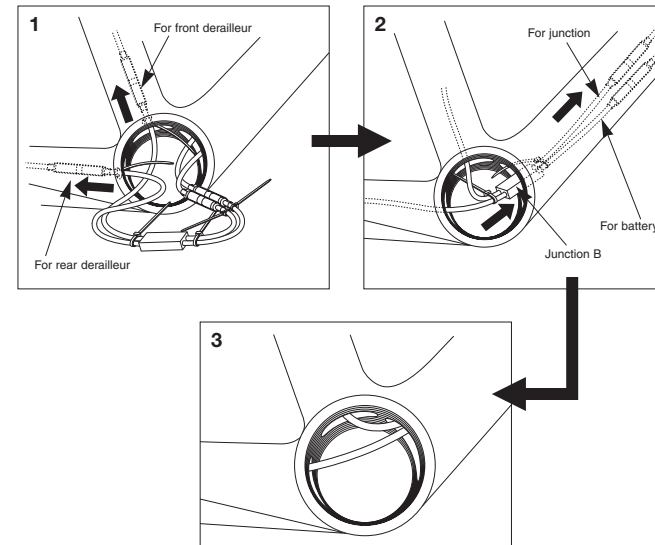
- If using an industrial-use dryer, make sure that no burning from the hot air occurs.

Note

- Do not heat the tubes any more than necessary.
- The heat shrinking tubes are important components for waterproofing, preventing the connectors from pulling out and strengthening the housing openings, so do not use anything other than genuine parts.
- Because the tubes contain adhesive, do not reuse the electric cables after this process has been carried out. Use new cables if carrying out any replacements.

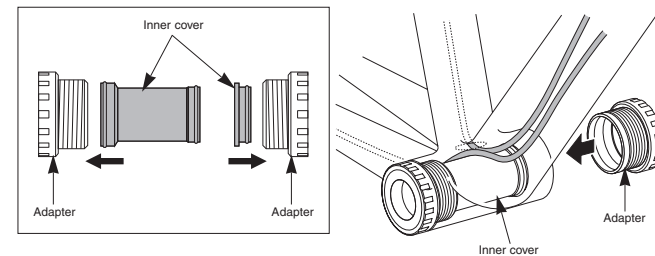
Routing the cables and junction B inside the frame

1. Pass the front derailleur and rear derailleur cable connectors through the seat tube and chainstay respectively.
2. Pass the junction and battery cable connectors and junction B through the down tube. Check that the screws of the bottom bracket shell do not damage any of the components at this time.
3. Set the cables so that only the front derailleur and rear derailleur cables are visible inside the bottom bracket shell, and if any extra parts such as cable ties are protruding, push them back inside the frame.



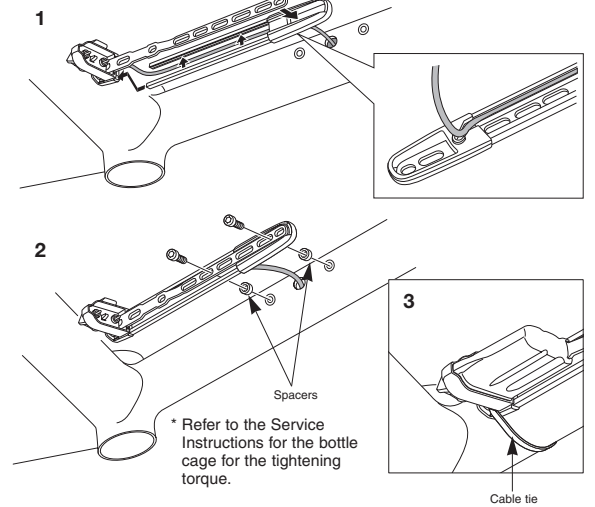
Assembly of the bottom bracket shell

1. When installing the inner cover to the bottom bracket shell, make sure that the front derailleur and rear derailleur cables pass over the top of the inner cover.
2. Install the inner cover to the bottom bracket adapter.



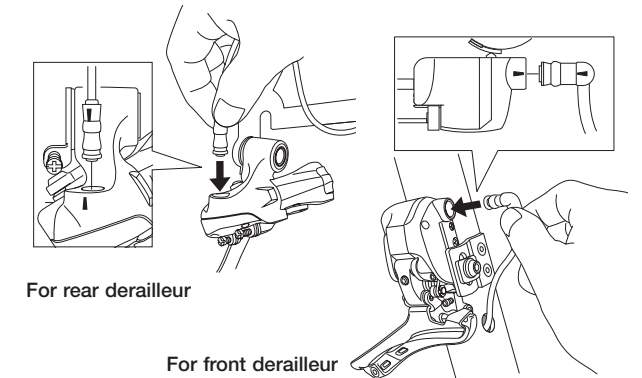
Installation of the battery bracket

1. Set the battery cable into the groove in the battery cable cover.
2. Place the accessory spacers in between the battery bracket and the frame and then secure them by tightening the bolts.
 * If installing the bottle cage, it is easier to install it at this stage.
3. Use the accessory cable tie to secure the battery bracket to the frame.

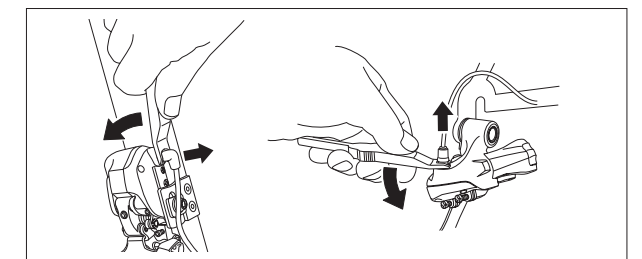


Connection to the derailleurs

Connect the electric cable connectors to the terminals of the derailleurs. Insert the connectors so that the triangular marks (▲) on the connectors and the derailleur terminals are aligned with each other. Because of the waterproof structure of the connectors and terminals, they do not fit together rigidly. Be sure to push them together until they connect with a click.



<Removal of the connectors>



Installation of the grommet

Attach a grommet to the cables at a suitable position, insert the rear part of the grommet into the hole in the frame, and then push the front part of the grommet to set it into place.

