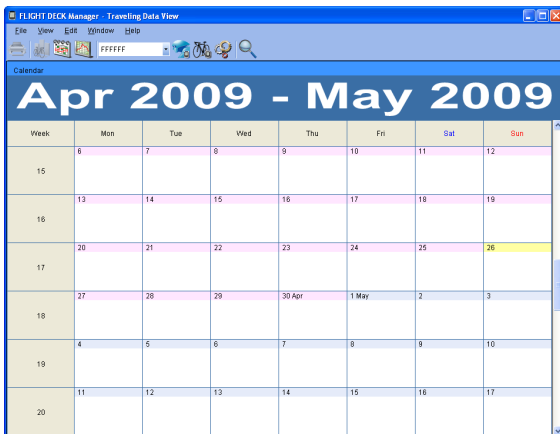


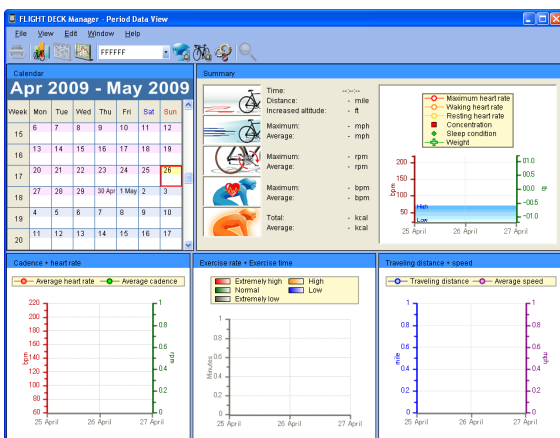
# Traveling data can be transmitted wirelessly to a PC for analysis using PC software

Traveling data can be transmitted wirelessly from the main unit to the PC. The traveling data can be analyzed and displayed graphically using PC software. An optional USB dongle can be used to make wireless connections to the PC.



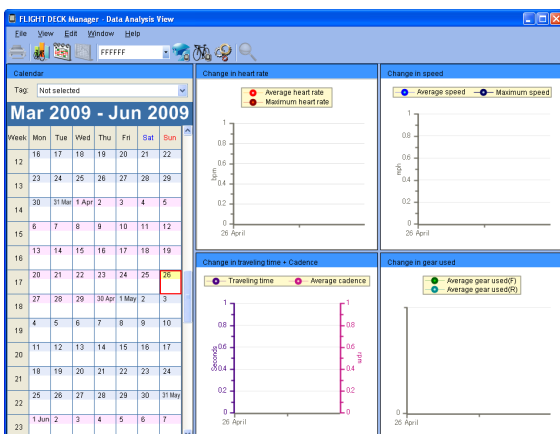
## Traveling Data View window

Six weeks' worth of traveling data will be linked, and the calendar color will change.



## Period Data View window

Displays traveling data such as traveling distance, traveling time, average speed, cadence, altitude and calorie consumption.



## Data Analysis View window

Displays the results of analysis of traveling data.