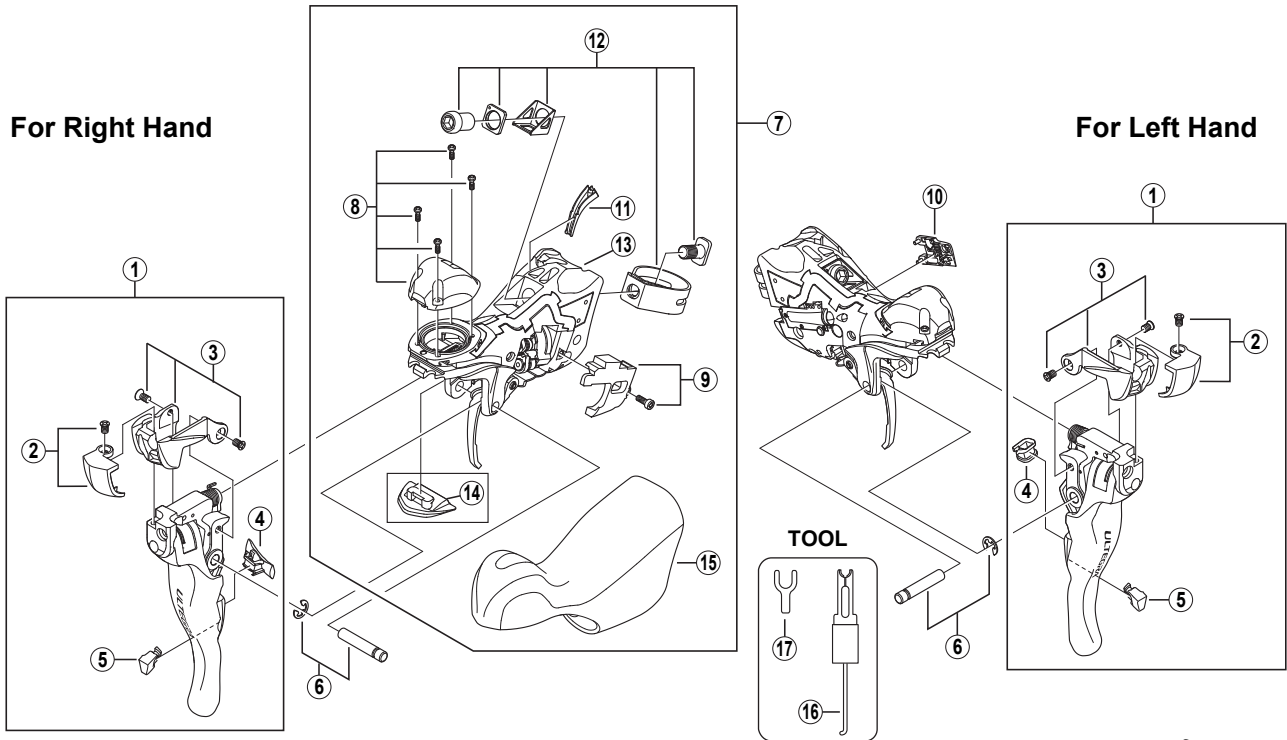


ULTEGRA Dual Control Lever (FLIGHT DECK Compatible)

# ST-6700



ST-7900

ITEM NO.	SHIMANO CODE NO.	DESCRIPTION	INTERCHANGEABILITY
1	Y-6SC98010	R.H. Main Lever Assembly	
	Y-6SC98020	L.H. Main Lever Assembly	
2	Y-6SC98030	R.H. Name Plate A & Fixing Screw	
	Y-6SC98040	L.H. Name Plate A & Fixing Screw	
3	Y-6SC98050	R.H. Name Plate B & Fixing Screws	
	Y-6SC98060	L.H. Name Plate B & Fixing Screws	
4	Y-6SC20000	R.H. Main Lever Support	
	Y-6SD70000	L.H. Main Lever Support	
5	Y-6RT37010	R.H. Release Lever Support	A
	Y-6RU87010	L.H. Release Lever Support	A
6	Y-6SC98070	Lever Axle & E-ring	
* 7	Y-6SC98190	R.H. Shifting Lever Unit	
	Y-6SC98200	L.H. Shifting Lever Unit	
8	Y-6SC98100	R.H. Top Cover Unitless & Fixing Screws	
	Y-6SC98110	L.H. Top Cover Unitless & Fixing Screws	
* 9	Y-6SC98210	Unit Cover & Fixing Screw	
10	Y-6RU54000	SL Cable Cover	A
11	Y-6RT46000	R.H. SL Cable Guide	A
	Y-6SD66000	L.H. SL Cable Guide	
12	Y-6SC98150	Clamp Band Unit (φ23.8 mm — φ24.2 mm)	
* 13	Y-6SC98220	R.H. Bracket	
	Y-6SC98230	L.H. Bracket	
14	Y-6SC76000	R.H. Adjustment Block (5mm)	
	Y-6SC76010	L.H. Adjustmen Block (5mm)	
	Y-6SC75000	R.H. Adjustment Block (10mm)	
	Y-6SC75010	L.H. Adjustmen Block (10mm)	
15	Y-6SC98180	Bracket Covers (Pair)	
16	Y-6RT68000	Tool A for E-ring	A
17	Y-6RT66000	Tool B for E-ring	A

A: Same parts.

B: Parts are usable, but differ in materials, appearance, finish, size, etc.

Absence of mark indicates non-interchangeability.

Aug.-2009-2936A  
© Shimano Inc. W

Specifications are subject to change without notice.

# SHIMANO